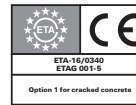


# RM II

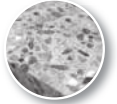
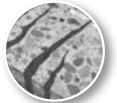


**fischer**   
innovative solutions

**fischerwerke GmbH & Co. KG**  
Klaus-Fischer-Straße 1  
72178 Waldachtal, Germany  
Tel. +49 7443 12-0  
Fax +49 7443 12-4222  
www.fischer.de



\* Information sur le niveau d'émission de substances volatiles dans l'air intérieur, présentant un risque de toxicité par inhalation, sur une échelle de classe allant de A+ (très faibles émissions) à C (fortes émissions).



163367 - 01/2017

**fischer**   
innovative solutions



**RA-SDS**  
Art. No. 062420



**SDS max 1/2" VK (M16 - M20)**  
Art. No. 001538



**SDS max 3/4" VK (M20 - M30)**  
Art. No. 001539



**SDS plus 1/2" VK (M8 - M16)**  
Art. No. 001537



**SK SW 8 1/2" VK (M8 - M22)**  
Art. No. 001536

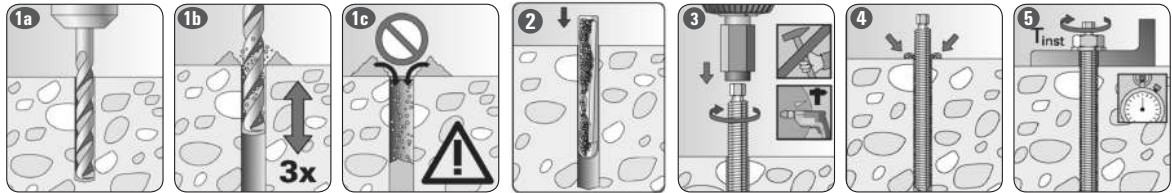


# RM II



	-15 -- -10	-9 -- -5	-4 -- ±0	+1 -- +5	+6 -- +10	+11 -- +20	+21 -- +30	+31 -- +40
	30 h	16 h	10 h	45 min	30 min	20 min	5 min	3 min

	d					$T_{inst, max}$			
		$d_0$	$h_{ef} = h_0$	$d_f$	RM II		Art. No.		
	M8	Ø 10 mm	80 mm	9 mm	10 Nm	RM II 8	539796	✓	
	M10	Ø 12 mm	90 mm	12 mm	20 Nm	RM II 10	539797	✓	
	M12	Ø 14 mm	110 mm	14 mm	40 Nm	RM II 12	539798	✓	
	M14	Ø 16 mm	120 mm	16 mm	50 Nm	RM II 14	539799	-	
	M16	Ø 18 mm	125 mm	18 mm	60 Nm	RM II 16	539800	✓	
	M20	Ø 25 mm	170 mm	22 mm	120 Nm	RM II 20/22	539802	✓	
	M22	Ø 25 mm	190 mm	24 mm	135 Nm	RM II 20/22	539802	-	
	M24	Ø 28 mm	210 mm	26 mm	150 Nm	RM II 24	539803	✓	



	d					$d_f$	$T_{inst, max}$			
		$d_0$	$h_{ef} = h_0$	$l_{E, min}$	$l_{E, max}$			RM II	Art. No.	
	M8	Ø 14 mm	90 mm	8 mm	18 mm	9 mm	10 Nm	RM II 10	539797	✓
	M10	Ø 18 mm	90 mm	10 mm	23 mm	12 mm	20 Nm	RM II 12	539798	✓
	M12	Ø 20 mm	125 mm	12 mm	26 mm	14 mm	40 Nm	RM II 16	539800	✓
	M16	Ø 24 mm	160 mm	16 mm	35 mm	18 mm	80 Nm	RM II 16 E	539801	✓
	M20	Ø 32 mm	200 mm	20 mm	45 mm	22 mm	120 Nm	RM II 24	539803	✓

