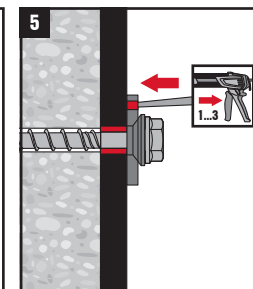
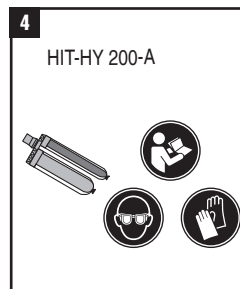
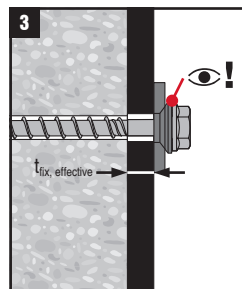
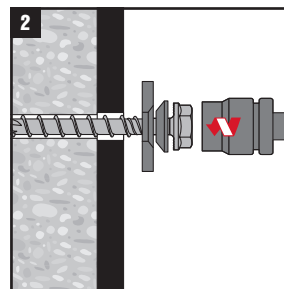
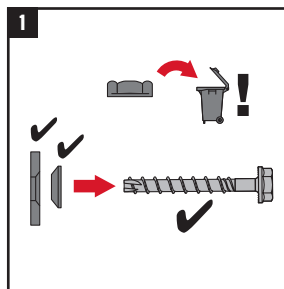
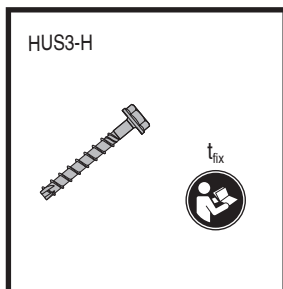
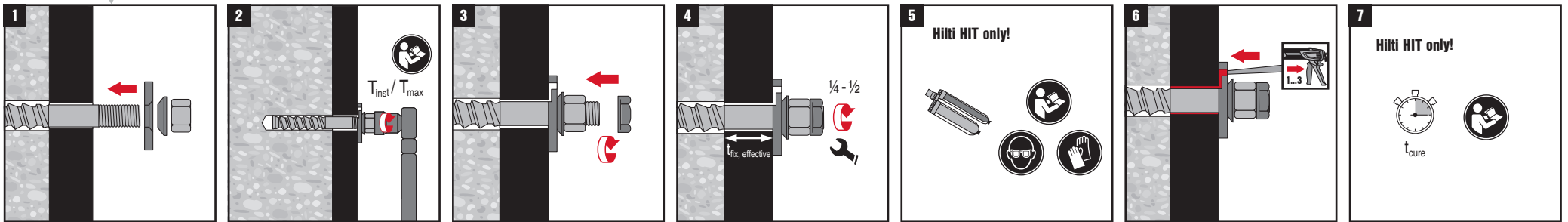


Size	$t_{fix, effective}$ (mm)
M8	$t_{fix} - 8$ mm
M10	$t_{fix} - 9$ mm
M12	$t_{fix} - 10$ mm
M16	$t_{fix} - 11$ mm
M20	$t_{fix} - 13$ mm
M24	$t_{fix} - 15$ mm



Size Seismic Set	Size HUS3	$t_{fix, effective}$ (mm)
M10	8	$t_{fix} - 7$ mm
M12	10	$t_{fix} - 8$ mm
M16	14	$t_{fix} - 9$ mm

CE

0672
HILTI AG, FL-9494 Schaan
 Hilti Werke
 14
 0672-CPR-0361
 ETA-13/1038
 ETAG 001-3 Option 1
 Seismic C1
 EAD 330011-00-0601

